



Fully automatic and fixed

Overheight Frame

OHF

- The only truly **fully self-sufficient frame**
- **Always ready for operation** due to no batteries, no electrics, no charging
- **Sturdy and durable design** for rough environment
- **Low maintenance** due to simple, efficient and proven technology

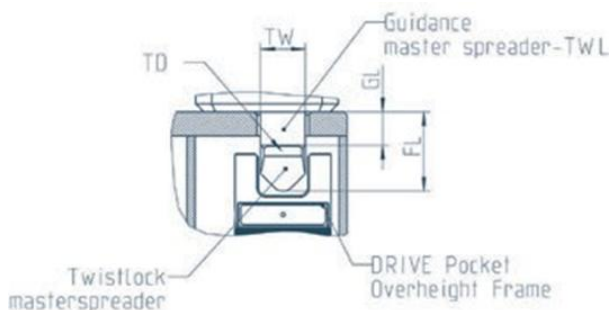
Function

- Pick-up by the master spreader (same procedure as for a standard box)
- Placement on the out-of-gauge cargo and simple locking by unlocking and relocking the spreader twistlocks.
- Top Safety: The twisting of the OHF's twistlocks is only possible if they are correctly aligned. All four safety pins have to be pushed in simultaneously.
- Clear optical indication of OHF twistlock position.
- All four TWLs rotate simultaneously and lock at an exactly 90° position. The spreader twistlock activation angle is only 65°.
- After lowering the cargo, the driver decides whether the OHF remains on the container or if the handling device takes it away

Technical Data

OHF-S₄

Free overheight	2.1 m	2.5 m	2.98 m	2.1 m	2.5 m	2.98m
Length:	20ft		40ft			
Lifting capacity:	40.000 kg Classification H2B4 eccentric load 2/5 : 35 50.000kg Classification H1B2 centric					
Temperature range:	-20°C up to 55°C					
Brake deceleration operation:	0.8 m/s²					
Max. Brake deceleration:	4.9 m/s²					
total height:	2.53 m	2.93 m	3,41 m	2.53 m	2.93 m	3.41 m
Net weight:	3.3 t	3.4 t	3.6 t	4.2 t	4.3 t	4.5 t



Requirements

Required torque of the master spreader has to be at least 150 Nm (standard). The master spreader TWLs have to meet the following standard dimensions:

- Width TWL: TW 50 -60 mm
- Diameter TWL: TD 100-120 mm
- Guidance: GL 40-50 mm
- Full Length TWL: FL max. 104